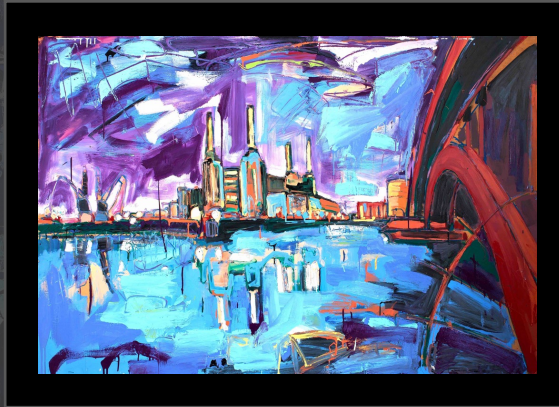


STUDIO JAFRI

LONDON - NEW YORK - DUBAI

11-14 BOMBAY STREET SE1 LONDON



OWNER'S AUTHENTICITY CERTIFICATE 'BATTERSEA AT MOONLIGHT' - SACHA JAFRI

TITLE: 'Battersea at Moonlight'
Sacha Jafri Original Work
One of Jafri's most revered pieces from his 18yr Retrospective Collection, a poignant and Historic depiction of Battersea Power Station, from the South Side of the River in Chelsea, under the iridescent light of the Moon.

COMPLETED: 2008

MEDIUM:
Oil & Acrylic on Teak-Wood

DIMENSIONS: 200cm x 140cm

FRAME:
Hand-Made - dark charcoal black
Ornate Impressionist Frame

COLLECTION:
'Historic Legacy-Scapes'
The Battersea Collection

DECEMBER 2022: £2.5million GBP

ARTIST: Sacha Jafri

OWNED BY: Private Collection

EXHIBITED: The Saatchi Gallery 18yr Retrospective Collection (London), MOMIMA (Sharjah), Alexia Goethe Gallery (Dover Street - London), MOMA (Frankfurt) Prada Institute (New York), The Bermondsey Street Gallery (London), The Kings Road Gallery (London), The Ryder Street Gallery 10yr Retrospective Collection (London), Belvedere Gallery & Arts House Museum One Parliament Square (Singapore), The House of Lords (London), The Islamic Museum (Qatar), The Royal Collection (Dubai), Blenheim Palace (UK), The Hermitage (Monaco), UNESCO HQ (Paris), St Catherine's Institute (Oxford) The National Museum (New Delhi), The Berlin Institute (Germany), The Natural History Museum (London)

STUDIO JAFRI:
SHERIN SCHMITZ

STUDIO-JAFRI

S Schmitz 16/12/22
Date:

